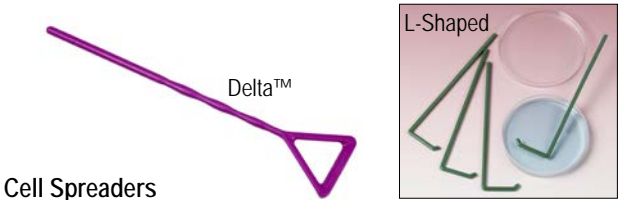


**Inoculation Picks**, autoclavable wood, USA  
 Mini, 33 mm (1.23"), semi-point, Bx/2000. **HS120009** ..... \$63.60  
 Fits in closed 1.5 mL tube.  
 Large, 15.3 cm (6"), semi-point, Bx/500. **HS120013** ..... \$45.20



**Cell Spreaders**  
 Disposable, polypropylene, sterile  
 Delta™, sterile bag/1, Cs/500. **HS8151** ..... \$66.35  
 Measures 172 mm long x 37 mm bar x 4 mm dia.  
 L-Shaped, sterile bag/10, Cs/500. **HS8171B** ..... \$65.70  
 Measures 146 mm long x 38 mm bar x 4 mm dia.

**Stainless Steel, 20 cm handle**  
 Small, 16 mm bar width. **377360006** ..... \$17.70  
 Large, 33 mm bar width. **HS86655** ..... \$11.45

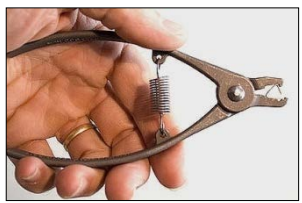
**Microtome Blades**  
 Microtome Blades - see Microtome Blades in Tissue (Embedding) & Biopsy Cassettes section

**Punches & Tags**

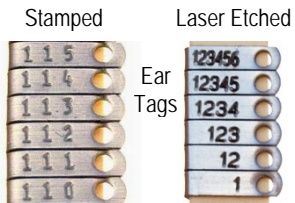
**Biopsy Punches**, disposable, sterile, 9 cm (3½"), Healthlink  
 2 mm, yellow handle, Bx/25. **1309** ..... \$50.40  
 3 mm, gray handle, Bx/25. **1311** ..... \$50.40  
 4 mm, blue handle, Bx/25. **1313** ..... \$50.40  
 5 mm, pink handle, Bx/25. **1314** ..... \$50.40



**Ear Punch**, thumb grip, 2 mm hole, plated steel, USA. **1538** ..... \$9.05



**Ear Tag Applicator**, USA. **1005s1** ..... \$45.40



**Ear Tags**, nickel-copper alloy  
 \*Specify 3-digit number sequence, e.g., 100-199  
**Stamped**  
 Pk/100. **1005-1-\_\_-\_\_\*** ..... \$30.00  
 Pk/500. **1005-1-\_\_-\_\_\*** ..... \$105.00  
 Pk/1000. **1005-1-\_\_-\_\_\*** ..... \$150.00  
**Laser Etched**  
 Pk/100. **1005-1L1-\_\_-\_\_\*** ..... \$50.00  
 Pk/1000. **1005-1L1-\_\_-\_\_\*** ..... \$224.00

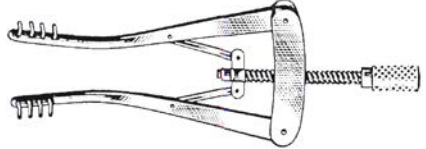
**Razor Blades**



Single edge blades are 2.25" long.  
 Manufactured by Medical Specialties; formerly Pilling Weck Surgical Inc. (WECPREP™).

**Razor Blades**, prep, USA, Bx/50. **450205MS** ..... \$45.00

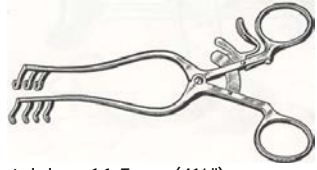
**Retractors & Specula**



**Retractors**  
 Alm, self-retaining, blunt 4 x 4 prongs  
 8 cm (3"), economy. **44-1519** ..... \$30.00  
 10 cm (4"), economy. **44-1520** ..... \$30.00



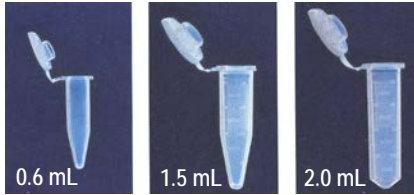
**Barraquer**, wire loop, 4 cm (1½")  
 4 mm Loop, economy. **33-1222** ..... \$20.00  
 8 mm Loop, economy. **33-1221** ..... \$20.00



**Weitlaner**, self-retaining, 11.5 cm (4½")  
 Sharp 2 x 3 Prongs, economy. **44-1505** ..... \$60.00  
 Blunt 2 x 3 Prongs, economy. **44-1501** ..... \$60.00



**Specula**  
 Graves Vaginal, medium, economy. **3310** ..... \$18.00  
 Vienna Nasal, child, 13 cm (5¼"). **2722** ..... \$10.00  
 lightweight, stainless steel



Tubes will withstand centrifugal forces over 30,000 x g and temperatures from -80° to 121°C. Flat, textured caps are pierceable. Free of RNase/DNase.

**Tubes, Microcentrifuge, Premium, PP, G-Tube™, Bio Plas, USA**  
Amber color protects light sensitive specimens.

- 0.6 mL, Pk/500 ..... \$21.35  
Amber. **4048** Lavender. **4047** Natural. **4040**  
Mixed (blue, green, orange, pink, & yellow). **4049** ..... \$25.70
- 1.5 mL, 0.5 mL graduations, frosted area on side, Pk/500..... \$21.35  
Amber. **4038** Blue. **4033** Lavender. **4037** Natural. **4030**  
Mixed (blue, green, orange, pink, & yellow). **4039** ..... \$25.70
- 2.0 mL, 0.5 mL graduations, frosted area on side, Pk/500..... \$22.90  
Amber. **4058** Blue. **4053** Natural. **4050**  
Mixed (blue, green, orange, pink, & yellow). **4059** ..... \$27.30

**Tubes, Microcentrifuge, Siliconized, G-Tube™, Bio Plas, USA**

- 1.5 mL, natural color, Pk/500. **4165SL** ..... \$43.45  
*Siliconized products should NOT be autoclaved*



**Inoculation Picks, autoclavable wood, USA**

- Mini, 33 mm (1.23"), semi-point, Bx/2000. **HS120009** ..... \$65.50  
Fits in closed 1.5 mL tube.



Securely close lids on 0.5 and 1.5 mL microcentrifuge tubes with these autoclavable, polypropylene holders. Extract tubes from centrifuges, dry baths, racks, etc. using large tabs. Assorted colors.

- Microcentrifuge Tube Holders, Pk/100. **HS4350** ..... \$21.35

Double-ended tool opens both snap cap and screw cap microcentrifuge tubes. 5 cm (2") long.



- Microcentrifuge Tube Opener, Pk/4. **4000** ..... \$7.70



**Tubes, PCR, 0.2 mL thin-wall, polypropylene**  
Individual, flat caps, Simport

- Blue, Pk/1000. **T325-2VB** ..... \$44.00  
Natural, Pk/1000. **T325-2VN** ..... \$44.00
- Strips, Amplitube™, Low Profile, individually attached caps  
8-Tube, Pk/125 (1000 tubes). **T320-2LPN** ..... \$88.80  
Holds 0.1 mL. Tubes have flat caps & natural color.
- Strips, Bio Plas, *Caps are sold separately; available in natural only.*  
8-Tube Cap Strips, domed, Pk/300 (2400 caps). **5030-1**.. \$74.35  
12-Tube, Pk/100 (1200 tubes) ..... \$79.70  
Blue. **5020-4** Natural. **5020-1**  
12-Tube Cap Strips, domed, Pk/200 (2400 caps). **5040-1** \$74.35



Transport and store biological specimens in these self-standing tubes. External threads minimize contamination. Dimensions of tube with cap: 17 mm diameter x 84 mm high.

**Tubes, Transport, polypropylene with cap, 10 mL, Simport**

- Plain, Cs/1000. **T550-10AT/T550W** ..... \$119.00  
Graduated, Cs/1000. **T550-10ATPR/T550W** ..... \$149.00  
Tubes have a writing surface and 0.5 mL graduations from 1-9 mL.



**Vial Decapping Pliers, vinyl grip, USA**

- For 13 mm Crimp Seals. **D-13** ..... \$72.00  
For 20 mm Crimp Seals. **D-20** ..... \$72.00  
For 30 mm Crimp Seals. **D-30** ..... \$72.00

**Tube Storage**



**Baskets, test tube, aluminum, Heathrow**

- Small, 15.2 x 15.2 x 15.2 cm(H). **HS20341A** ..... \$24.55  
Medium, 25.6 x 15.2 x 15.2 cm(H). **HS20341B** ..... \$27.60