

LED

- 3.4V/0.06W LED, Wedge. **800-001** \$11.70
(MA2215)
- 3.4V/3W LED Assembly. **800-500** \$32.40
- Led Assembly. **800-425** \$32.40
- Led Assembly. **800-426** \$34.20



Metal Halide

- 60V/24W MR11, 300 hrs, Welch Allyn. **09500-U** \$270.00
(AL-1824, 8-61257)

Mercury Short Arc

- 50W Mercury Arc, 100 Hrs, Osram. **HBO50W/AC/L1** \$115.00
(78564, 78588, 8-B199, 38-16-19, 414140, 2055, 3040-0090, 500-137, SHL-50AC1, BA-001, 5000487)
- 50W Mercury Arc, 100 Hrs, Osram. **HBO50W/AC/L2** \$115.00
(31-31-65, SHL-50AC2, BA-002, 5000857)
- 50W Mercury Arc, 200 Hrs, Osram. **HBO50W/3** \$140.00
(BA-003)
- 100W Mercury Arc, 200 Hrs, Ushio. **USH-102D** \$109.00
(78589, 8-B192U, 500-138, 3800-18-4060/D, 2087-001, 3040-0380, BA-005A, HBO100W/2, M/5000/133, 5000274)
- 100W Mercury Arc, 300 Hrs, Ushio. **USH-103D** \$123.00
(78590, 8-B1920, 380301-9350, USH-103OL, 5001329)
- 100W Mercury Arc, 200 Hrs, Osram. **HBO100W/2** \$109.00
(78589, 8-B192U, 500-138, 3800-18-4060/D, M/5000/133 2087-001, 3040-0380, BA-005, 3254, USH-102D)
- 100W Mercury Arc, 300 Hrs, Osram. **HBO103W/2** \$123.00
(Not compatible with all Hg power supplies)
(78590, 8-B1920, 380301-9350, 500-321)
- 200W Mercury Arc, 1000 hrs, Ushio. **USH-200DP** \$135.80
(HBO200W/2, 31-01-01, 649, 860014, 78580, 8-B190, 3800-18-4070, 38-16-15, 050-320, MA885, 91-00-50, 505-620, 78590, 5000276)

Xenon Short Arc

- 75W Xenon Arc, 400 hrs, Ushio. **UXL-75XE** \$195.00
(XBO75W/2, 8-B198, 910881-2013, 38-16-02, 500-139, 91-01-42, 3800-79-9190, 78682, 620-125, 903-050, BA-013, 5000371)
- 75W Xenon Arc, 400 hrs, Osram. **XBO75W/2** \$184.00
(UXL-75XE, 8-B198, 910881-2013, 38-16-02, 500-139, 91-01-42, 3800-79-9190, 78682, 620-125, 903-050, BA-013, 5000371)
- 150W Xenon Arc, Short Gap. **XBO150W/CROFR** \$260.00
(8-B195, BA-018, UXL-150S-0, 3801-22-2450, 500-008, 5000326)
- 180W Xenon Arc, Osram. **XBOR180W45COFR** \$450.00
(69183, 407.309)

Fluorescent

- 4W Fluorescent, Tubular, Eiko. **F4T5/D** \$7.00
(31-31-03, MA309/05, 3000108)
- 5W Fluorescent, G23, Sylvania. **CF5DS/841** \$5.00
(21278, 800-138, MA68, 48920-81, 20303)
- 9W Fluorescent, G23, Sylvania. **CF9DS/841** \$4.95
(20305)
- 22W Fluorescent, 8" OD Circle, Sylvania. **FC8T9/D/RS** \$19.00
(29980)
- 32W Fluorescent, 12" OD Circle, Sylvania. **FC12T9/D/RS** \$15.90
(20030)

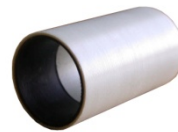
Germicidal

- 4W Germicidal (UV-C), G5, Osram. **G4T5/OF** \$10.35
(23397)
- 15W Germicidal (UV-C), G13, Sylvania. **G15T8** \$17.00
(21612, 3000007)
- 25W Germicidal (UV-C), G13, Ushio. **G25T8** \$19.80
(3000008)
- 30W Germicidal (UV-C), G13, Sylvania. **G30T8** \$20.00
(23112, 00204, 11080, 3000009)
- 39W Germicidal, single-pin, Ushio. **G36T5L** \$35.80
(23443, 00206, 3000312)
- 65W Germicidal, single-pin, 155.4 cm, Higuchi. **G64T5L** \$83.00

Heat (Infrared)

- 250W, R40, shatter resistant, GE. **250BR40/HI/TC** \$14.00

* Recommend Bulb Removal/Installation Tool (shown below)



Remove and install prefocused/flanged bulbs safely with this simple tool. Push rubber-lined tube directly onto top of bulb and turn clockwise to install, or counterclockwise to remove.

- Bulb Removal/Installation Tool. 3283** \$16.00

- Compressed Air, 10 oz Can. 77001** \$12.00
Ultra pure duster is nonflammable.



Continued