

**Scissors, Operating (cont)**

**Straight, S/B (sharp/blunt) tips**

11.5 cm (4½"), Economy. <b>12-015</b> .....	\$5.45
12 cm (4¾"), Standard. <b>10-453</b> .....	\$17.85
12 cm (4¾"), German. <b>100-453</b> .....	\$33.60
14 cm (5½"), Economy. <b>12-025</b> .....	\$5.50
14 cm (5½"), Standard. <b>10-550</b> .....	\$21.30
14 cm (5½"), Standard-TC. <b>16-805</b> .....	\$47.60
14 cm (5½"), German. <b>100-552</b> .....	\$36.50
16.5 cm (6½"), Economy. <b>12-035</b> .....	\$7.20
16.5 cm (6½"), Standard. <b>10-600</b> .....	\$24.75
16.5 cm (6½"), German. <b>100-602</b> .....	\$40.20

**Straight, B/B (blunt/blunt) tips**

11.5 cm (4½"), Economy. <b>12-075</b> .....	\$5.25
14 cm (5½"), Economy. <b>12-085</b> .....	\$5.50
14 cm (5½"), Standard. <b>10-558</b> .....	\$21.30
14 cm (5½"), Standard-TC. <b>16-815</b> .....	\$47.50
14 cm (5½"), German. <b>102-558</b> .....	\$36.50
16.5 cm (6½"), Economy. <b>12-095</b> .....	\$7.20
16.5 cm (6½"), Standard. <b>10-608</b> .....	\$24.75
16.5 cm (6½"), German. <b>102-608</b> .....	\$40.20

**Curved, S/S (sharp/sharp) tips**

14 cm (5½"), Economy. <b>12-155</b> .....	\$6.00
14.5 cm (5¾"), Standard. <b>10-566</b> .....	\$21.80
16.5 cm (6½"), Economy. <b>12-165</b> .....	\$7.60
16.5 cm (6½"), Standard. <b>10-616</b> .....	\$25.25

**Curved, S/B (sharp/blunt) tips**

11.5 cm (4½"), Economy. <b>12-115</b> .....	\$5.25
14 cm (5½"), Economy. <b>12-125</b> .....	\$6.00
14 cm (5½"), Standard. <b>10-560</b> .....	\$21.80
14 cm (5½"), German. <b>100-560</b> .....	\$37.90
16.5 cm (6½"), Economy. <b>12-135</b> .....	\$7.60
16.5 cm (6½"), Standard. <b>10-610</b> .....	\$25.25
16.5 cm (6½"), German. <b>100-610</b> .....	\$41.30

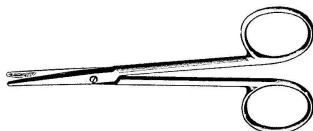
**Curved, B/B (blunt/blunt) tips**

11.5 cm (4½"), Economy. <b>12-175</b> .....	\$5.25
14 cm (5½"), Economy. <b>12-185</b> .....	\$6.00
14 cm (5½"), Standard. <b>10-568</b> .....	\$21.80
16.5 cm (6½"), Economy. <b>12-195</b> .....	\$7.60
16.5 cm (6½"), Standard. <b>10-618</b> .....	\$25.25



**Scissors, Stevens Tenotomy, 11.5 cm (4½"), stainless steel**

Straight, blunt tips, Standard. <b>13-520</b> .....	\$24.75
---	---------



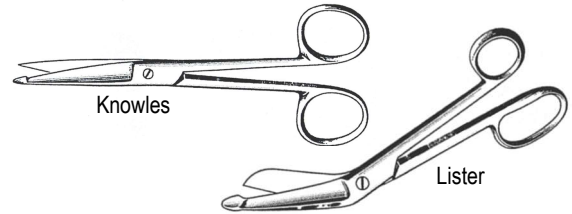
**Scissors, Strabismus, stainless steel**

**Straight**

10 cm (4"), Economy. <b>26-105</b> .....	\$7.25
11.5 cm (4½"), Standard. <b>13-524</b> .....	\$23.65

**Curved**

11 cm (4¼"), Economy. <b>26-110</b> .....	\$7.25
11.5 cm (4½"), Standard. <b>13-526</b> .....	\$24.15



**Scissors, Bandage, stainless steel, economy**

Knowles, straight, sharp probe tips, 14 cm (5½"). <b>1070</b> .....	\$6.25
Lister, angled, blunt probe tips, 14 cm (5½"). <b>1050</b> .....	\$5.00

Can be used as enterotomy scissors.



Cut through everything from wire to bone with these durable scissors. Bottom blade is serrated and has a footplate for safety. Blades are stainless steel & handles are plastic. Autoclavable to 120° C.

<b>Utility Shears, 18 cm (7¼"), economy. 310-341</b> .....	\$5.25
--	--------

**Scrapers**

Remove paraffin, ice, etc., safely from your laboratory equipment with these plastic scrapers.



**Scrapers, plastic**

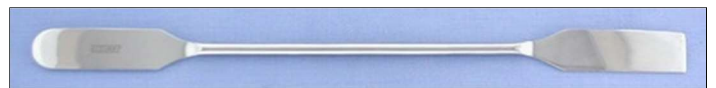
5 cm (2") Wide Blade. <b>311-245</b> .....	\$3.70
10 cm (4") Wide Blade. <b>311-250</b> .....	\$4.70
15 cm (6") Wide Blade. <b>311-255</b> .....	\$5.70

**Spatulas & Scoops**



**Spatulas, Hardwood Handle, stainless steel blade**

10 cm (4") Blade. <b>14-365B</b> .....	\$4.60
15 cm (6") Blade. <b>14-365D</b> .....	\$6.00
20 cm (8") Blade. <b>20-497</b> .....	\$6.05



**Spatulas, Heavy-Duty, stainless steel**

**Round End/Square End, both flat**

30.5 cm (12"). <b>320-425</b> .....	\$14.95
46 cm (18"). <b>320-430</b> .....	\$18.90