

Scissors, Operating (cont)

Straight, S/B (sharp/blunt) tips

11.5 cm (4½"), Economy. 12-015	\$5.40
12 cm (4¾"), Standard. 10-453	\$17.85
12 cm (4¾"), German. 100-453	\$33.60
14 cm (5½"), Economy. 12-025	\$5.70
14 cm (5½"), Standard. 10-550	\$21.30
14 cm (5½"), Standard-TC. 16-805	\$47.60
14 cm (5½"), German. 100-552	\$36.50
16.5 cm (6½"), Economy. 12-035	\$7.45
16.5 cm (6½"), Standard. 10-600	\$24.75
16.5 cm (6½"), Roboz. RS-6824	\$63.35

Straight, B/B (blunt/blunt) tips

11.5 cm (4½"), Economy. 12-075	\$5.40
14 cm (5½"), Economy. 12-085	\$5.70
14 cm (5½"), Standard. 10-558	\$21.30
14 cm (5½"), Standard-TC. 16-815	\$47.50
14 cm (5½"), German. 102-558	\$36.50
16.5 cm (6½"), Economy. 12-095	\$7.45
16.5 cm (6½"), Standard. 10-608	\$24.75
16.5 cm (6½"), Roboz. RS-6828	\$63.35

Curved, S/S (sharp/sharp) tips

14 cm (5½"), Economy. 12-155	\$6.15
14.5 cm (5¾"), Standard. 10-566	\$21.80
16.5 cm (6½"), Economy. 12-165	\$7.85
16.5 cm (6½"), Standard. 10-616	\$25.25

Curved, S/B (sharp/blunt) tips

11.5 cm (4½"), Economy. 12-115	\$5.40
14 cm (5½"), Economy. 12-125	\$6.15
14 cm (5½"), Standard. 10-560	\$21.80
14 cm (5½"), German. 100-560	\$37.90
16.5 cm (6½"), Economy. 12-135	\$7.85
16.5 cm (6½"), Standard. 10-610	\$25.25
16.5 cm (6½"), German. 100-610	\$41.30

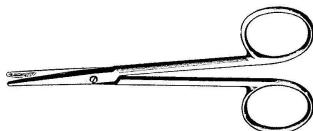
Curved, B/B (blunt/blunt) tips

11.5 cm (4½"), Economy. 12-175	\$5.40
14 cm (5½"), Economy. 12-185	\$6.15
14 cm (5½"), Standard. 10-568	\$21.80
16.5 cm (6½"), Economy. 12-195	\$7.60
16.5 cm (6½"), Standard. 10-618	\$25.25



Scissors, Stevens Tenotomy, 11.5 cm (4½"), stainless steel

Straight, blunt tips, Standard. 13-520	\$24.75
---	---------



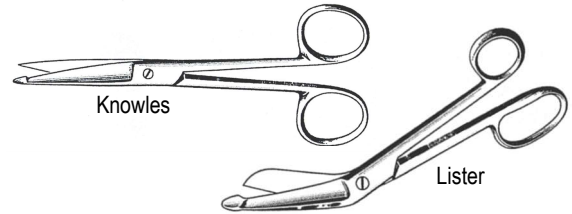
Scissors, Strabismus, stainless steel

Straight

10 cm (4"), Economy. 26-105	\$7.45
11.5 cm (4½"), Standard. 13-524	\$23.65

Curved

11 cm (4¼"), Economy. 26-110	\$7.45
11.5 cm (4½"), Standard. 13-526	\$24.15



Scissors, Bandage, stainless steel, economy

Knowles, straight, sharp probe tips, 14 cm (5½"). 1070	\$6.25
Lister, angled, blunt probe tips, 14 cm (5½"). 1050	\$5.00

Can be used as enterotomy scissors.



Cut through everything from wire to bone with these durable scissors. Bottom blade is serrated and has a footplate for safety. Blades are stainless steel & handles are plastic. Autoclavable to 120° C.

Utility Shears, 18 cm (7¼"), economy. 310-341	\$5.25
--	--------

Scrapers

Remove paraffin, ice, etc., safely from your laboratory equipment with these plastic scrapers.



Scrapers, plastic

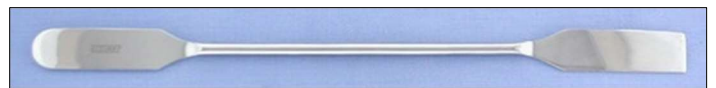
5 cm (2") Wide Blade. 311-245	\$3.70
10 cm (4") Wide Blade. 311-250	\$4.70
15 cm (6") Wide Blade. 311-255	\$5.70

Spatulas & Scoops



Spatulas, Hardwood Handle, stainless steel blade

10 cm (4") Blade. 14-365B	\$4.75
15 cm (6") Blade. 14-365D	\$6.20
20 cm (8") Blade. 20-497	\$6.05



Spatulas, Heavy-Duty, stainless steel

Round End/Square End, both flat

30.5 cm (12"). 320-425	\$14.90 ↓
46 cm (18"). 320-430	\$18.90